



- Overview >>
- Diversity >>
- Careers >>
- Locations >>
- Pro Bono >>
- Community Involvement >>
- Firm Leadership >>**

Firm Leadership

Management Team



Randall P. Beighle
General Counsel



Barbara J. Duffy
Litigation Department Director



Patrick J. Franke
Business Department Director



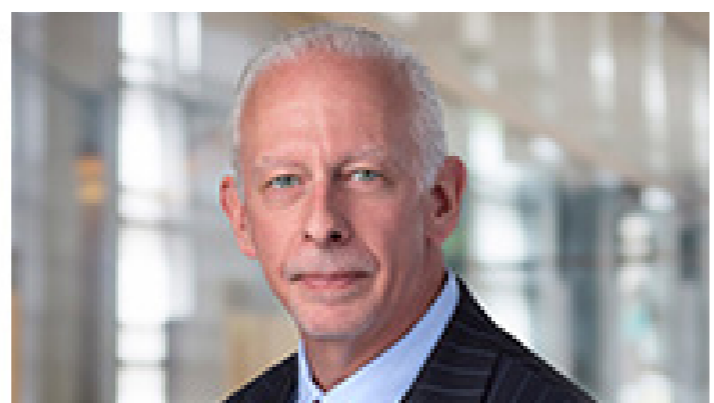
Charles W. Riley Jr.
President



Thomas W. Sondag
Vice President

RTE Field

Board of Directors



#	Font	Font Size	Linespacing
1	SSP Light (400)	15px	18px

*SSP = Source Sans Pro

Areas of Focus

- Business Transitions
- Construction
- Corporate, Securities and M&A
- ERISA, Life, Health & Disability
- Finance & Banking
- Immigration
- [More »](#)



Get to Know Us

- Full Team (96)
- Business Transitions (8)
- Construction (22)
- Corporate, Securities and M&A (36)
- ERISA, Life, Health & Disability (20)
- Finance & Banking (19)
- [More »](#)

Get to Know Us

Two spaces on either side of the "I"

ADD: Title 1

10px
15px

CHANGES:

- ADD Title 1
- ADD | between name a Title 1 (#f05329) (two space on either side)
- 10px between top of orange bar and photo
- 15px between bottom of orange bar and photo

#	Font	Font Size	Linespacing
1	SSP Semibold (600)	18px	21px
2	SSP Black (800)	18px	21px
3	SSP Light (300)	18px	21px

*SSP = Source Sans Pro

1 Barry A. Abbott | Shareholder 2 3



Barry A. Abbott | Shareholder



Jeremy Babener | Special Tax Counsel



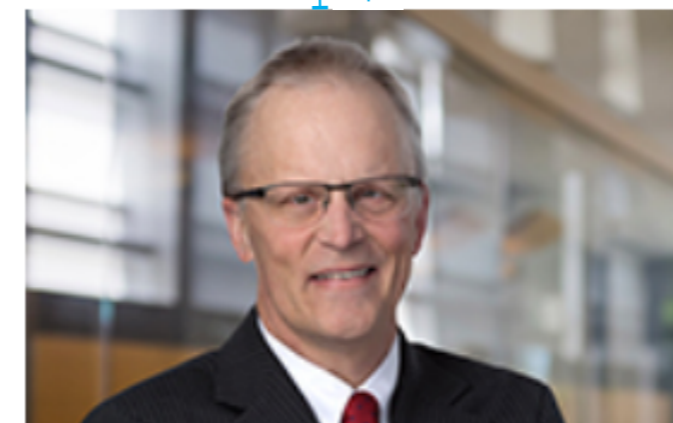
Jeremy R. Bader | Shareholder



Randall P. Beigle | Shareholder



A. Jeffery Bird | Shareholder



Brian G. Bodine | Shareholder



Katheryn Bradley | Shareholder



Jane E. Brown | Counsel to the Firm



Justin J. Cabrera | Associate



Scott F. Campbell | Shareholder



Makiko Coffland | Associate



Tiffany Scott Connors | Shareholder

CHANGES:

- FUNCTIONALITY: Team Chairs and Co-Chairs get pulled to first position and the rest follow alpha
- ADD Title 1
- 10px between top of orange bar and photo
- 15px between Team Chair text and below photo
- 15px between Team Chair text and photo
 - None Chair Status profiles should have 15px between the bottom of the | and the next profile
- ADD Team Chair/Co-chair information the let hand column
- 22px between contacts (left column)

#	Font	Font Size	Linespacing
1	SSP Light (300) - H2	25px	28.4px
2	SSP Semibold (600)	18px	24px
3	SSP Black (800)	18px	24px
4	SSP Light (300)	18px	24px
5	SSP Regular (400)	18px	24px
6	SSP Semobold (600)	18px	21px
7	SSP Black (800)	18px	21px
8	SSP Light (300)	18px	21px

*SSP = Source Sans Pro



ERISA, Life, Health & Disability (20)
 Finance & Banking (19)
[More >>](#)

- 1 Contact
- 2 A. Jeffery Bird | Chair
- 3 503.778.2173
- 4 birdj@lanepowell.com
- 5 Elizabeth A. D'Agostino | Co-Chair
- 6 D 503.778.2173
- 7 dagostinoe@lanepowell.com
- 8 Paige L. Davis | Co-Chair
- 9 D 503.778.2173 C 206.372.5010
- 10 davisp@lanepowell.com

Get to Know Us



A. Jeffery Bird | Co-Chair



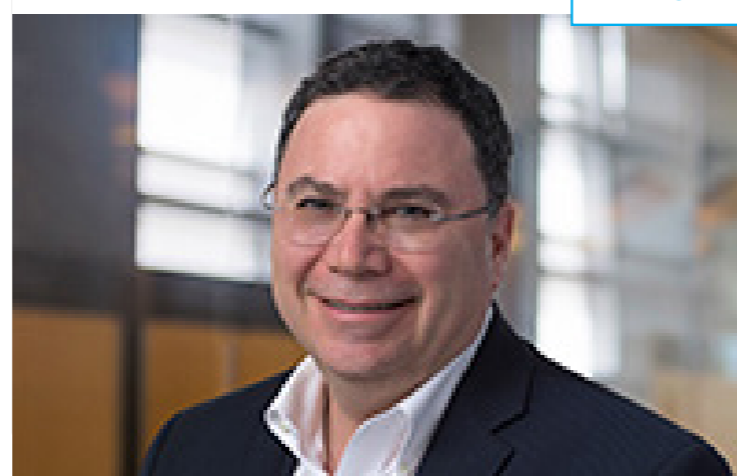
Elizabeth A. D'Agostino | Co-Chair



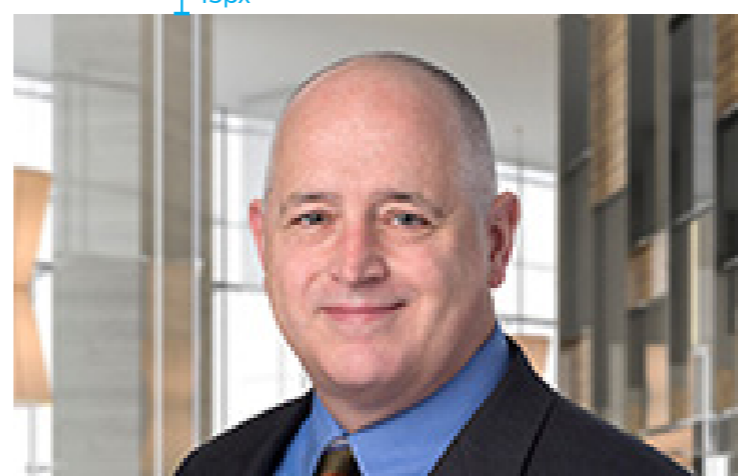
Paige L. Davis | Co-Chair



Karen Hobson | Counsel to the Firm



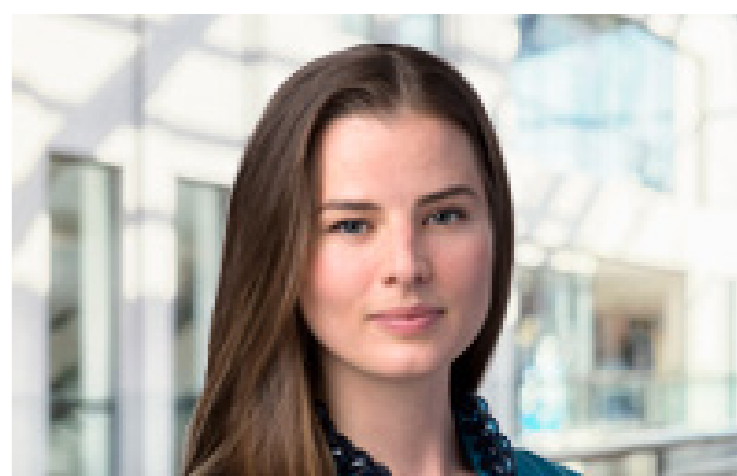
Lewis M. Horowitz | Shareholder



Gary M. Kirk | Shareholder



Janet Knauss Larsen | Shareholder



Lisa D. Poplawski | Shareholder

Pull Chair

Pull Title 1

Experience Highlights

- All Specialties (217)
- Business Transitions (1)
- Construction (24)
- Corporate, Securities and M&A (132)

Experience

